

Essex General Practice Appointments



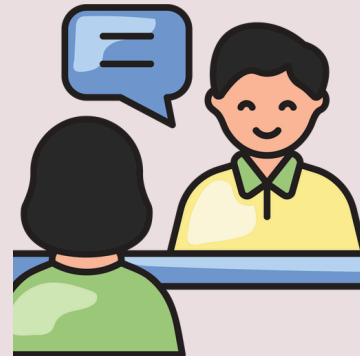
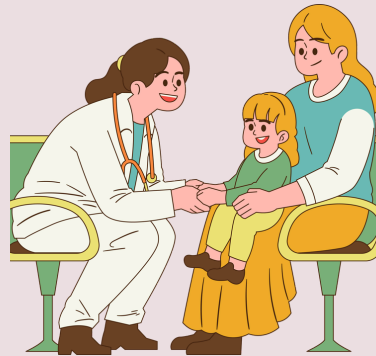
JANUARY 2026

Data published on 5 March 2026 by [NHS Digital](#)

The number of registered patients with an Essex GP practice as at 31 JANUARY 2026 is: **2,016,793**
(this is a decrease of 237 patients from December 2025)

1,001,106

...APPOINTMENTS OFFERED FOR ALL PRACTICE STAFF



674,230

...PATIENTS SEEN FACE-TO-FACE

46%

...OF PATIENTS WHO CONTACTED THEIR PRACTICE HAD A SAME DAY APPOINTMENT



1 in 3.05

...REGISTERED PATIENTS SAW THEIR GP FACE-TO-FACE

31,044

...IS THE NUMBER OF 'DID NOT ATTEND' APPOINTMENTS



2,070

...IS THE NUMBER OF HOURS WASTED
(based on 15 minute appointments)

Before contacting the practice, please do consider these options:

- The NHS website: www.nhs.uk
- 111 online: 111.nhs.uk
- Mental Health Support: www.nhs.uk/every-mind-matters
- Find a Pharmacy: www.nhs.uk/service-search/pharmacy/find-a-pharmacy
- Advice for parents of children and young people: healthiertogether.nhs.uk



- You may not always need to see a GP...
- Our trained clinical staff can treat a range of conditions...
- Helping you to be seen and treated sooner...



Your GP practice is here to support you. So, please continue to show them your support by being kind, patient and responsible when accessing their services.

Thank you for your support.